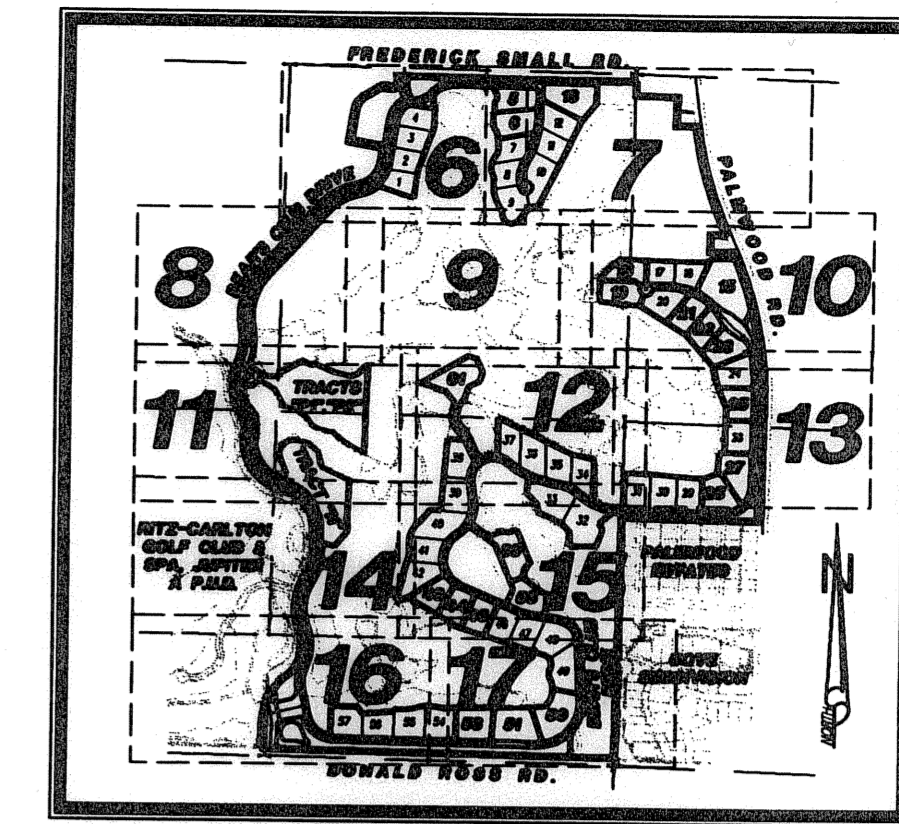


# BEAR'S CLUB REPLAT, A P.U.D.

BEING A REPLAT OF A PORTION OF BEAR'S CLUB, A P.U.D.,  
AS RECORDED IN PLAT BOOK 86, PAGES 122 THROUGH 128,  
AND A PARCEL OF LAND DESCRIBED IN OFFICIAL RECORD BOOK 11237 PAGE 75,  
ALL IN THE PUBLIC RECORDS OF PALM BEACH COUNTY FLORIDA,  
LYING IN SECTIONS 19 & 20, TOWNSHIP 41 SOUTH, RANGE 43 EAST  
TOWN OF JUPITER, PALM BEACH COUNTY, FLORIDA

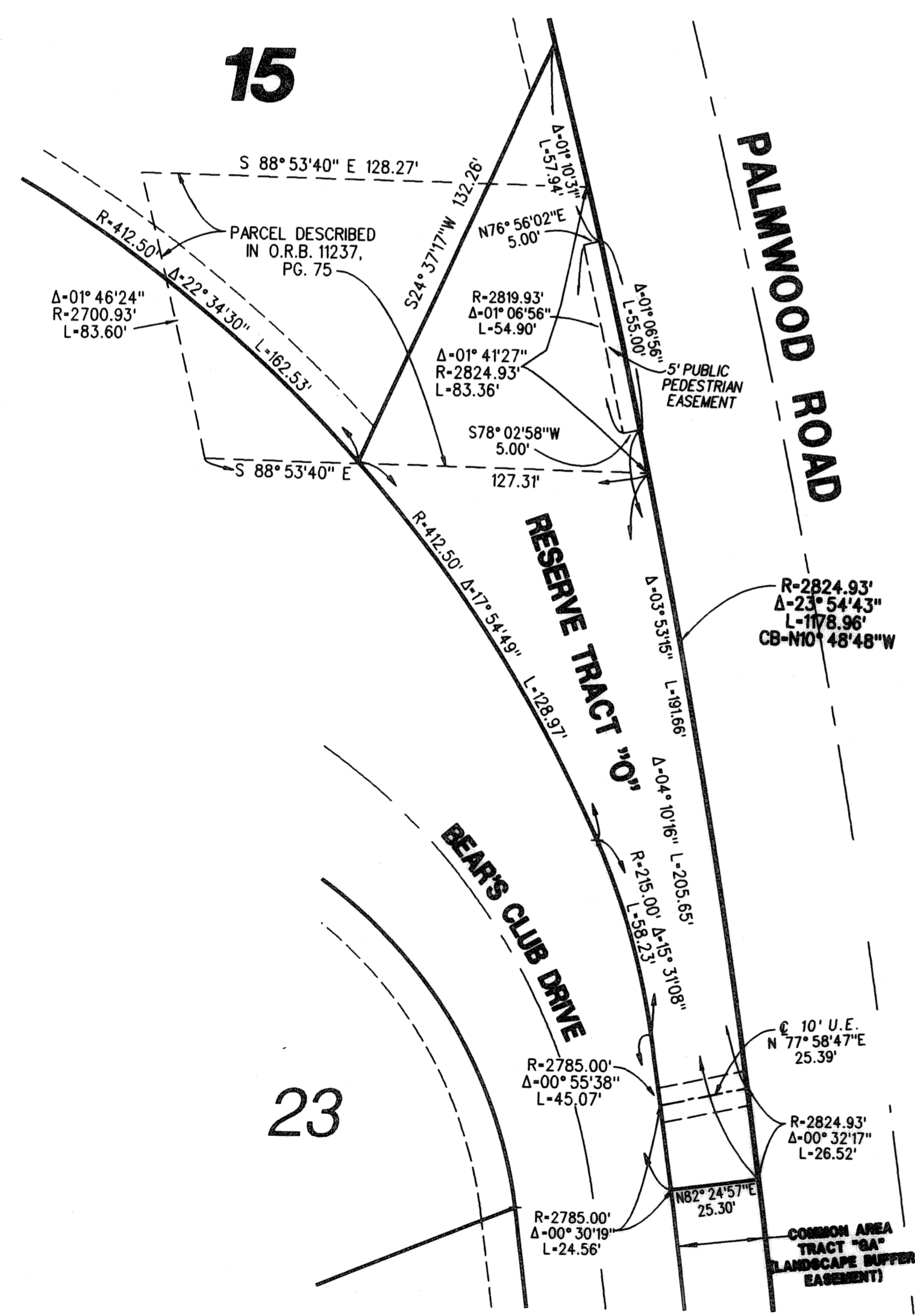
SHEET 20 OF 21 JULY 2005



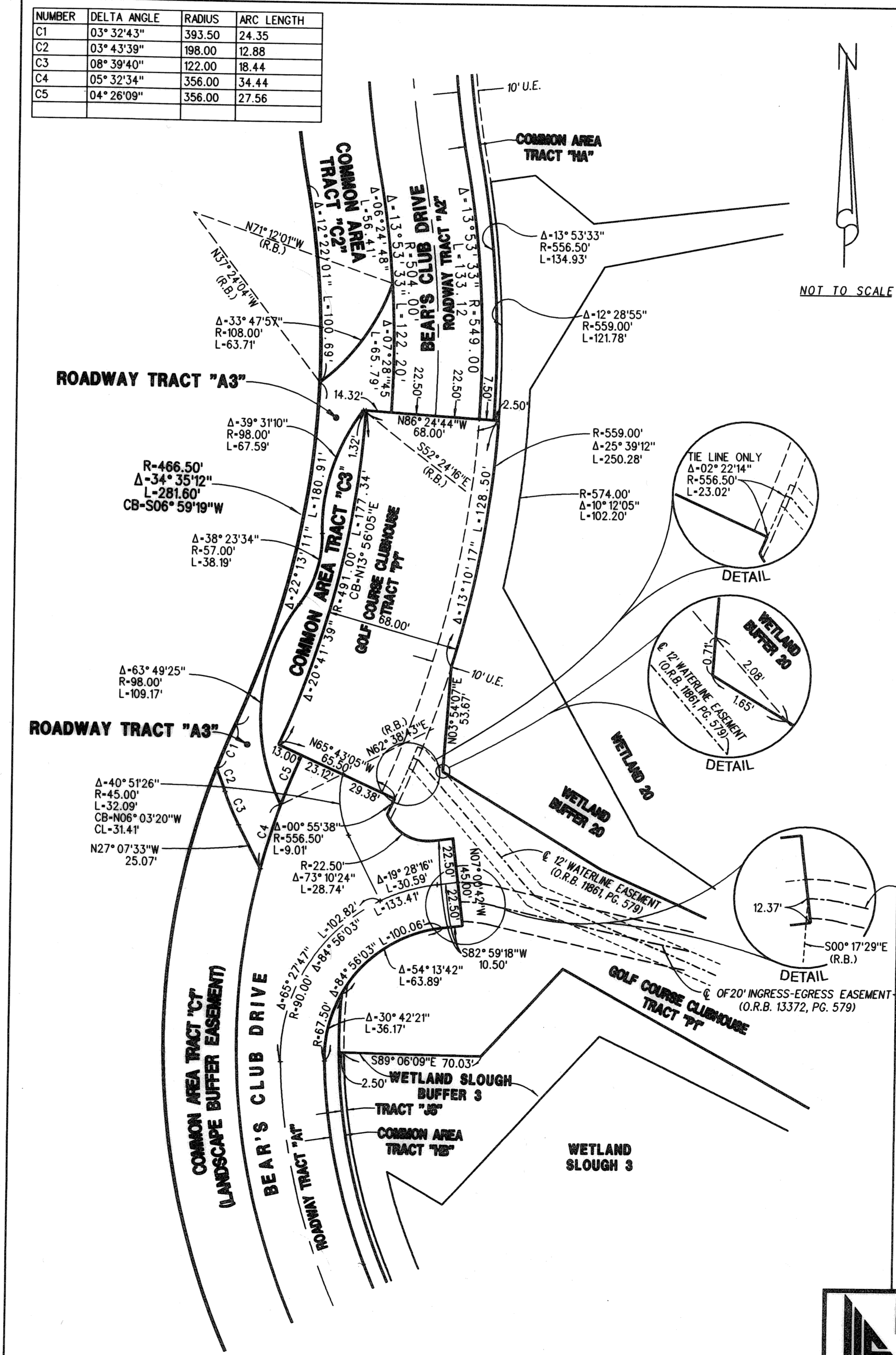
KEY SHEET

52

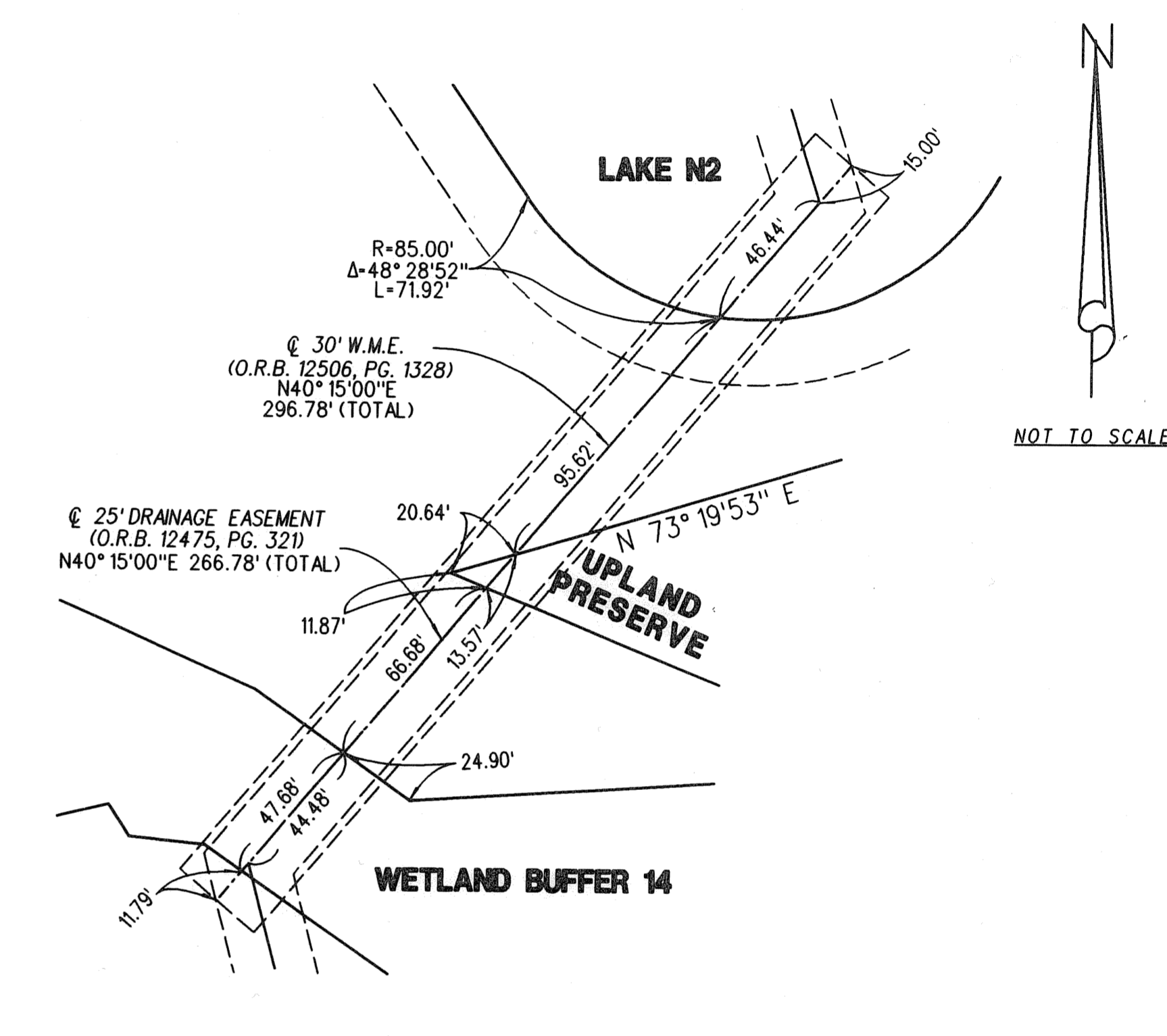
NUMBER	DELTA ANGLE	RADIUS	ARC LENGTH
C1	03° 32' 43"	393.50	24.35
C2	03° 43' 39"	198.00	12.88
C3	08° 39' 40"	122.00	18.44
C4	05° 32' 34"	356.00	34.44
C5	04° 26' 09"	356.00	27.56



DETAIL "EE" (SEE SHEET 10)



DETAIL "CC" (SEE SHEET 8 & 11)



DETAIL "DD" (SEE SHEET 9)

**LIDBERG LAND SURVEYING, INC.**  
675 West Indiantown Road, Suite 200,  
Jupiter, Florida 33458 TEL. 561-746-8454

CAD. K:\UST\194143\BEARCLUB\2090306\SHEET19.DGN		JOB 00-209-306	
REF. K:\UST\194143\BEARCLUB\2090306\2090306.DGN		DATE JUNE 2005	
FLD. B.D.	FB. PG.	DWG. D00-209P	
OFF. R.W. & E.C.	SHEET 20 OF 21		
CKD. D.C.L.	DWG. D00-209P		

\\BEARCLUB\2090306\SHEET20.dgn 8/24/2005 10:15:15 AM